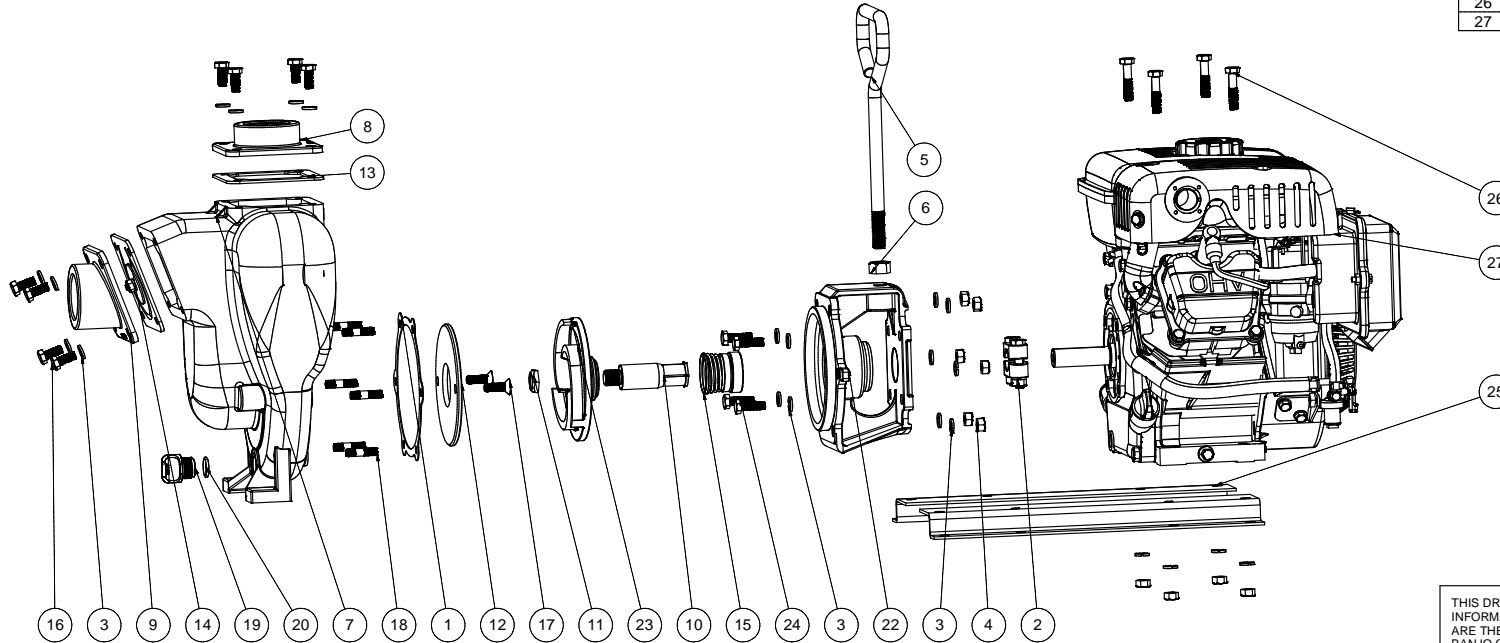


Parts List			
ITEM	QTY	PART NUMBER	DESCRIPTION
1	1	17018	PUMP ADAPTER GASKET
2	1	17123	CI PUMP KEYED CLAMP
3	22	V10118	5/16" LOCKWASHER
4	10	V10119	5/16" HEX NUT
5	1	15022	2" PUMP HANDLE
6	1	17010	1/2-13 HEX NUT
7	1	17026	2" PUMP HOUSING
8	1	17001	1 1/2" OUTLET FLANGE
9	1	17003	1 1/2" INLET FLANGE
10	1	17006	ADAPTER SHAFT
11	1	17009B	5/8-18 IMPELLER NUT
12	1	17011	WEAR PLATE
13	1	17013	OUTLET FLANGE GASKET
14	1	17016	CI PUMP CHECK VALVE ASSY
15	1	17135	MECH. SEAL ASSY.
16	8	17019	5/16-18 X 3/4" HHCS
17	2	17130	5/16-18 X 1" FHSCS
18	6	17042	5/16-18 X 1 1/4" STUD
19	1	12777	1/2" DRAIN PLUG
20	1	UV15163	2-114 O'RING
21	1	12910	DECAL (N/S)
22	1	17004	GAS ENGINE ADAPTER
23	1	17008	PUMP IMPELLER
24	4	17040	5/16-24 X 1" HHCS
25	1	17033	Z-RAIL (PAIR)
26	4	17034	5/16-18 X 1-1/2" HHCS
27	1	E3	3.5 HP B&S



THIS DRAWING AND ALL INFORMATION CONTAINED THEREON ARE THE EXCLUSIVE PROPERTY OF BANJO CORPORATION.

UNLESS SPECIFICALLY NOTED, THIS DRAWING AND ITEMS SHOWN ON THIS DRAWING ARE SUBJECT TO CHANGE AT ANY TIME.

**BANJO CORPORATION**  
 150 BANJO DRIVE, CRAWFORDSVILLE, IN 47933  
 WEB SITE: WWW.BANJOCORP.COM  
 E-MAIL: SALES1@BANJOCORP.COM

DESCRIPTION  
**1 1/2" CI PUMP W/ 3.5 HP B&S**

PART NUMBER  
**150PI-3**