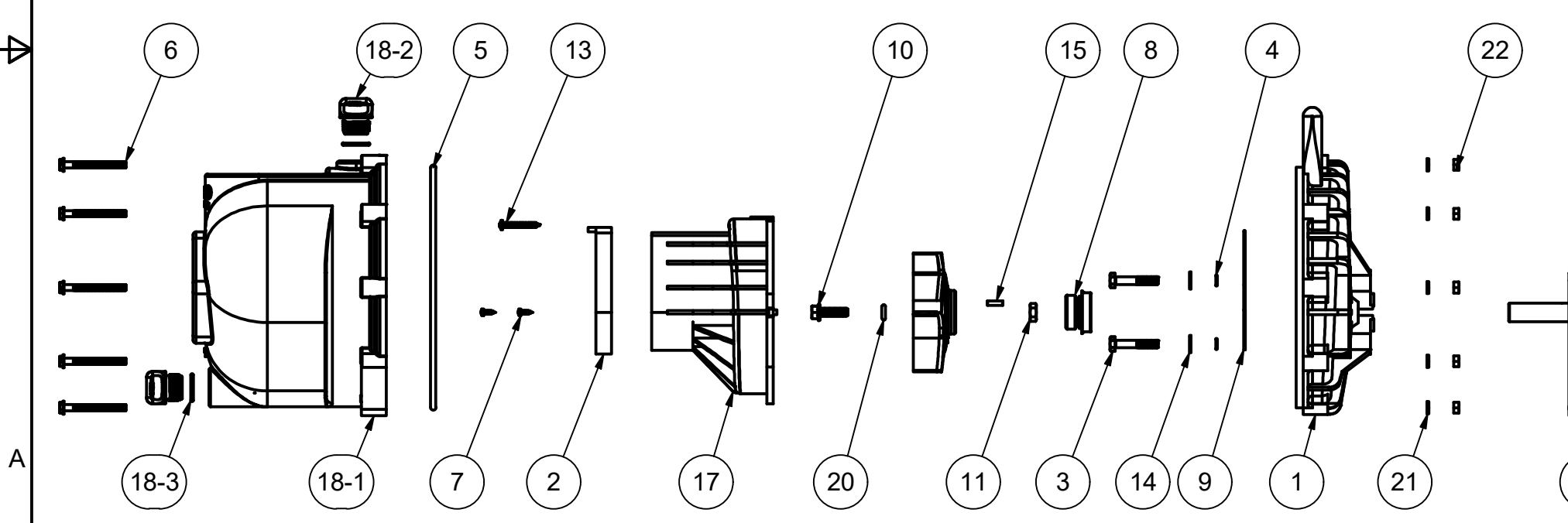



PARTS LIST			
ITEM	QTY	PART NUMBER	DESCRIPTION
1	1	12703A	POLY PUMP REAR BRACKET
2	1	12705	PUMP CHECKVALVE, EPDM
3	4	12715A	5/16-24 X 1 3/4" HHCS WITH TORQ-PATCH
4	4	12717	AS568A -011 O-RING, EPDM
5	1	12719A	AS568A -375 O-RING, EPDM, BLACK
6	10	12720	1/4-20 X 2 1/2" SL IND HWHS
7	2	12725	#6 X 1/2" PPH SMS
8	1	12733	MECHANICAL SEAL ASSY
9	1	12754	O-RING SEGMENT
10	1	12765A	5/16-24 X 1 1/8" HFS
11	1	12775A	7/16-14 HEX NUT
12	1	12882A	BEARING PEDESTAL
13	1	12900	#10 X 1 1/2" PPH SMS
14	4	12901	5/16" FLAT WASHER
15	1	12902A	3/16" SQ. X 5/8" KEY
16	1	12910	DECAL (N/S)
17	1	13702	3" POLY PUMP VOLUTE
18	1	13712	3" POLY PUMP BODY ASSY.
18-1	1	13712X	3" PUMP BODY
18-2	2	13777	3/4" DRAIN PLUG
18-3	2	13778	AS568A -119 O-RING, EPDM, BLACK
19	1	13771	3" POLY PUMP TRIMMED IMPELLER
20	1	A204	AS568A -204 O-RING, EPDM, BLACK
21	10	V07018	1/4" LOCKWASHER
22	10	V07019	1/4-20 HEX NUT





**BANJO CORPORATION**

150 BANJO DRIVE, CRAWFORDSVILLE, IN 47933  
 WEB SITE: WWW.BANJOCORP.COM  
 E-MAIL: BANJOSALES@IDEXCORP.COM

<p>THIS DRAWING AND ALL INFORMATION CONTAINED THEREON ARE THE EXCLUSIVE PROPERTY OF BANJO CORPORATION.</p> <p>UNLESS SPECIFICALLY NOTED, THIS DRAWING AND ITEMS SHOWN ON THIS DRAWING ARE SUBJECT TO CHANGE AT ANY TIME.</p>	<p>DESCRIPTION</p> <p><b>3"PLY PUMP W/BRNG PED - 3/4"SHFT</b></p> <p>PART NUMBER</p> <p style="text-align: center; font-weight: bold;">300PB</p>
--	--