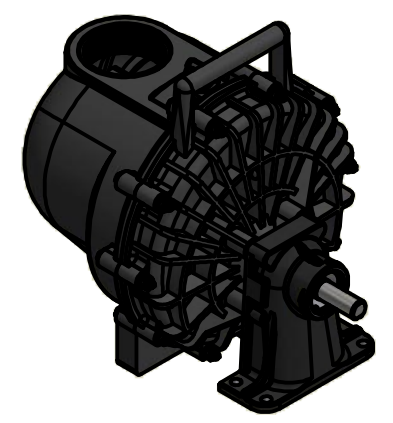
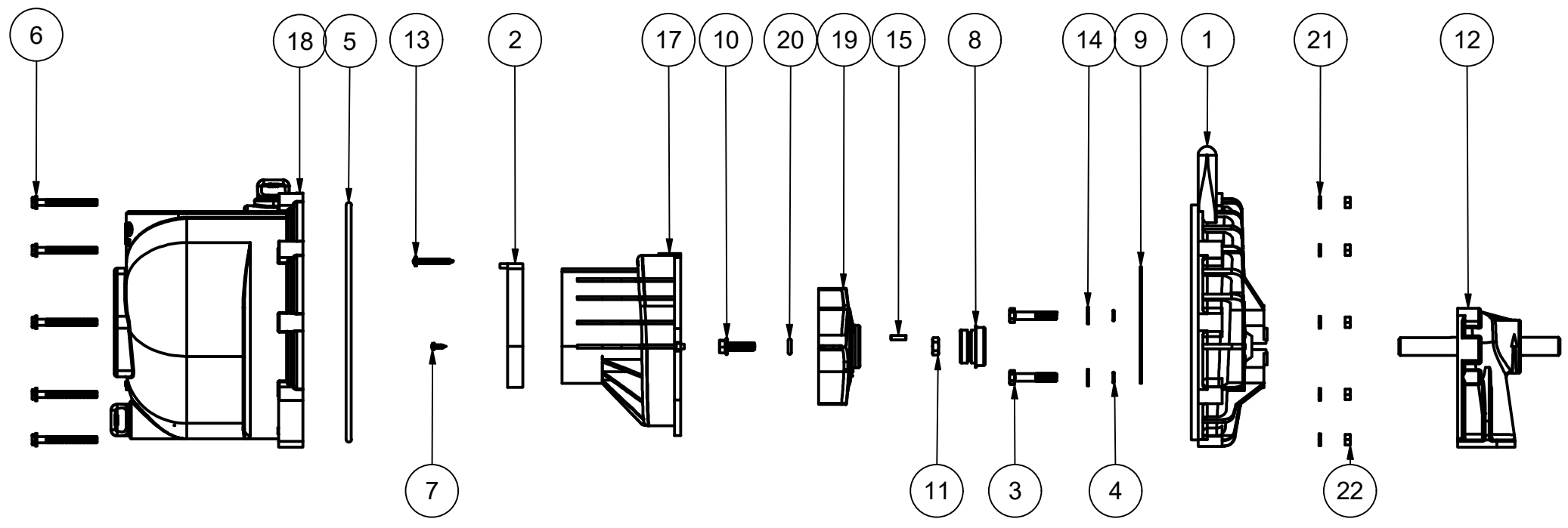



Parts List			
ITEM	QTY	PART NUMBER	DESCRIPTION
1	1	12703A	POLY PUMP REAR BRACKET
2	1	12705V	PUMP CHECKVALVE, FKM
3	4	12715A	5/16-24 X 1 3/4" HHCS WITH TORQ-PATCH
4	4	12717V	#11 O'RING, FKM
5	1	12719AV	#375 O'RING, FKM
6	10	12720	1/4-20 X 2 1/2" SL IND HWHS
7	2	12725	#6 X 1/2" PPH SMS
8	1	12733V	MECH SEAL ASSY - FKM
9	1	12754V	O'RING SEGMENT
10	1	12765A	5/16-24 X 1 1/8" HFS
11	1	12775A	7/16-14 HEX NUT
12	1	12882A	BEARING PEDESTAL
13	1	12900	#10 X 1 1/2" PPH SMS
14	4	12901	5/16" FLAT WASHER
15	1	12902A	3/16" SQ. X 5/8" KEY
16	1	12910	DECAL (N/S)
17	1	13702	3" POLY PUMP VOLUTE
18	1	13712VP	3" POLY PUMP BODY ASSEMBLY - FKM
19	1	13771	3" POLY PUMP TRIMMED IMPELLER
20	1	A204V	#204 O'RING, FKM
21	10	V07018	1/4" LOCKWASHER
22	10	V07019	1/4-20 HEX NUT



THIS DRAWING AND ALL INFORMATION CONTAINED THEREON ARE THE EXCLUSIVE PROPERTY OF BANJO CORPORATION.

UNLESS SPECIFICALLY NOTED, THIS DRAWING AND ITEMS SHOWN ON THIS DRAWING ARE SUBJECT TO CHANGE AT ANY TIME.



BANJO CORPORATION

150 BANJO DRIVE, CRAWFORDSVILLE, IN 47933
 WEB SITE: WWW.BANJOCORP.COM
 E-MAIL: BANJOSALES@IDEXCORP.COM

DESCRIPTION
3" POLY PUMP W/ BEARING PEDESTAL, FKM

PART NUMBER
300PB-V