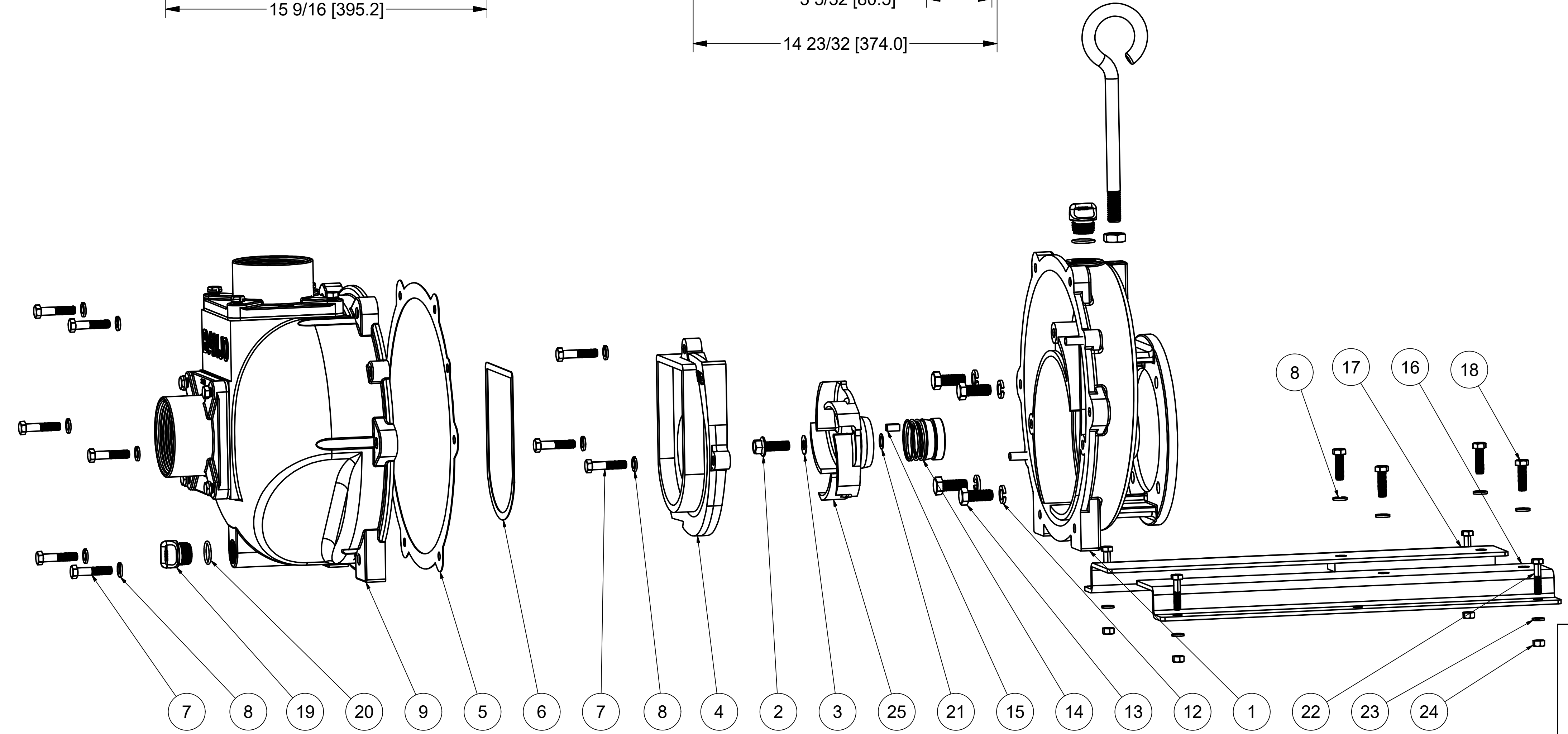


Parts List			
ITEM	QTY	PART NUMBER	DESCRIPTION
1	1	16704A	CI REAR BRKT W/ C-FACE ADPT
2	1	16765	7/16-20 1 1/4" HFS
3	1	16019C	GASKET
4	1	16702	4" PUMP VOLUTE
5	1	16019A	GASKET
6	1	16019B	GASKET
7	9	V20011SS	3/8-16 X 1 3/4" HHCS
8	13	V20018	3/8" LOCKWASHER
9	1	16733	3" PUMP BODY ASSY.
10	1	18033	PUMP HANDLE
11	1	18034	5/8-11 JAM NUT
12	4	18058	1/2" LOCKWASHER
13	4	17449	1/2-13 X 1 1/4" HHCS
14	1	15025	MECH. SEAL ASSY.
15	1	17901	5/16" SQ X 5/8" KEY
16	1	15033A	Z-RAIL
17	1	15033B	Z-RAIL
18	4	17704	3/8-16 X 1 1/4" HHCS
19	2	13777	3/4" DRAIN PLUG
20	2	13778	#119 O'RING, EPDM
21	1	15752	IMPELLER SHIM
22	4	17034	5/16-18 X 1-1/2" HHCS
23	4	V10118	5/16" LOCKWASHER
24	4	V10119	5/16" HEX NUT
25	1	16774A	5 VANE TRIMMED IMPELLER

NOTE:
DESIGNED FOR 213/215 FRAME MOTORS



THIS DRAWING AND ALL INFORMATION CONTAINED THEREON ARE THE EXCLUSIVE PROPERTY OF BANJO CORPORATION.
UNLESS SPECIFICALLY NOTED, THIS DRAWING AND ITEMS SHOWN ON THIS DRAWING ARE SUBJECT TO CHANGE AT ANY TIME.

BANJO CORPORATION
150 BANJO DRIVE, CRAWFORDSVILLE, IN 47933
WEB SITE: WWW.BANJO.CORP.COM
E-MAIL: BANJOSALES@DEXCORP.COM

DESCRIPTION
3" CI PUMP W/ ELEC. MTR ADAPTER

PART NUMBER
333POICF