



MARCH PUMPS

1819 PICKWICK AVE., GLENVIEW, IL 60026-1306, U.S.A
 PHONE: (847) 729-5300 - FAX: (847) 729-7062
 WWW.MARCHPUMP.COM

DESCRIPTION:

Series 1 are centrifugal magnetic drive pumps, eliminating the need for a shaft seal. Pumps are serviceable with a screwdriver. See below for a breakdown of parts.

OPERATION:

Pumps are not self-priming, lack a suction lift, and thus require a **flooded suction**. Pumps **cannot be run dry** because the impeller requires the liquid being pumped for lubrication. For application assistance, contact March Pump.

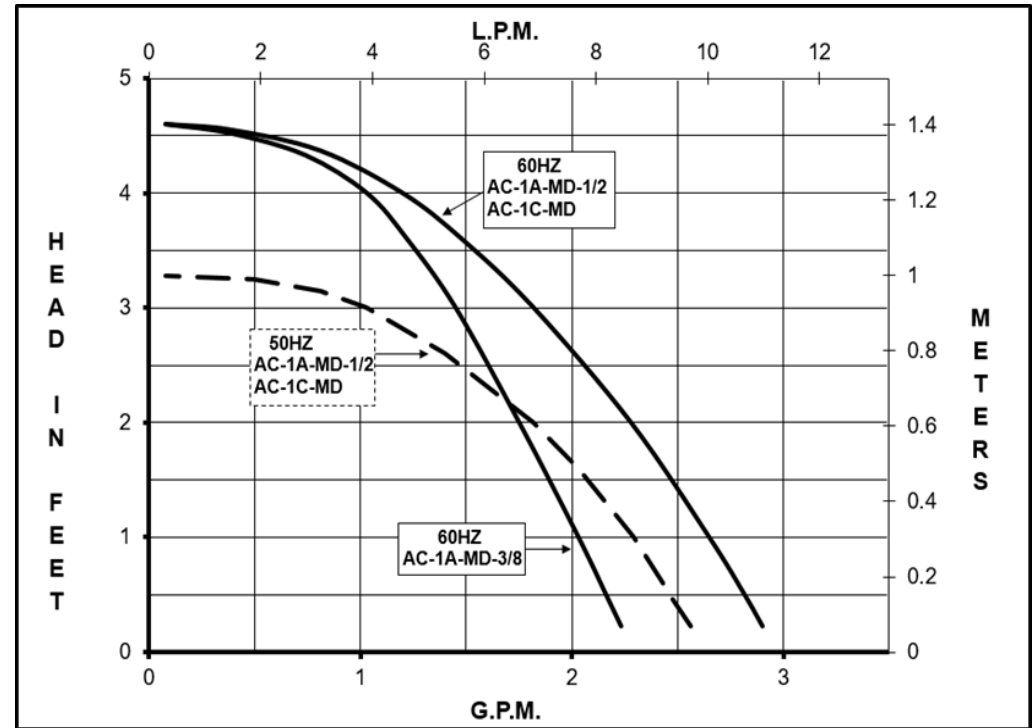
ELECTRICAL:

Motors are available in different electrical configurations such as 115 volt 60 Hz or 230 volt 50/60 Hz, 1 phase, and rated as continuous duty. Motors are skeleton type. Motors have 16" (40 cm) loose leads.

LIMITED WARRANTY:

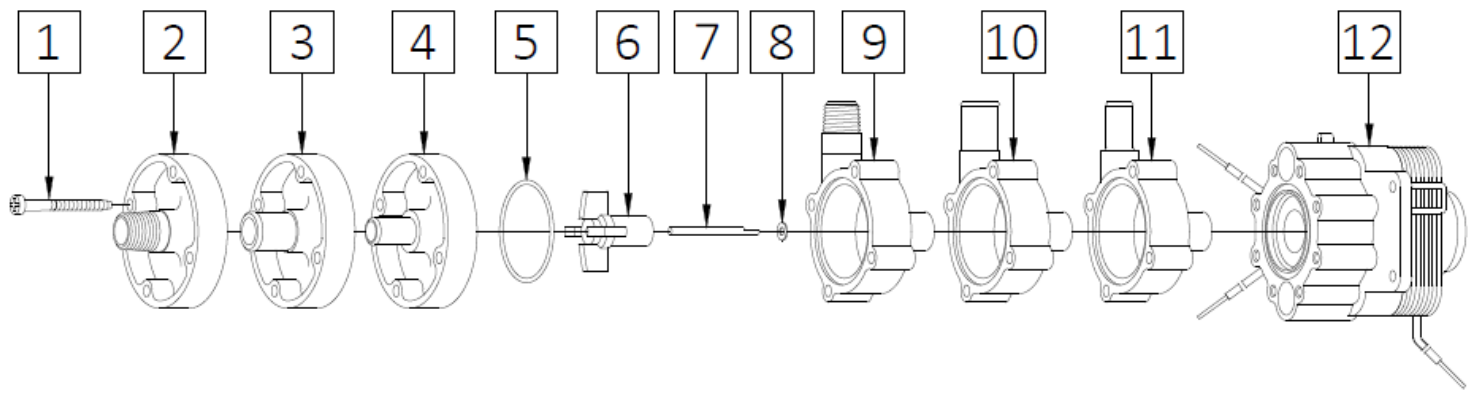
March pumps are guaranteed only against defects in workmanship or materials for a period of one year from date of manufacture pumping water. For the complete warranty and to register online go to www.marchpump.com/warranty-registration

AC-1A-MD, AC-1C-MD



Specifications		AC-1A-MD-3/8											AC-1A-MD-1/2											AC-1C-MD										
Part Number	115 V	0115-0064-0300											0115-0064-0100											0115-0070-0100										
	230 V	0115-0064-0400											0115-0064-0200											0115-0071-0100										
Inlet - Outlet		3/8" OD - 3/8" OD											1/2" OD - 1/2" OD											1/4" MPT - 1/4" MPT										
Max Internal Pressure		50 psi (344 kPa)											50 psi (344 kPa)											50 psi (344 kPa)										
Max Liquid Temperature		190 °F (87 °C)											190 °F (87 °C)											190 °F (87 °C)										
MODEL	60 Hz												50 Hz																					
	Max Flow		Max Head			ELECTRICAL							Max Flow		Max Head			ELECTRICAL																
	gpm	lpm	ft	psi	m	Ph	V	A	Hp	kW	Rpm	gpm	lpm	ft	psi	m	Ph	V	A	Hp	kW	Rpm												
AC-1A-MD-3/8	2.3	8.7	4.6	2.0	1.4	1	115	0.45	1/200	0.003	3200	2.0	7.5	3.3	1.4	1.0	1	230	0.23	1/200	0.003	2650												
							230	0.23																										
AC-1A-MD-1/2	3.0	11.3	4.6	2.0	1.4	1	115	0.45	1/200	0.003	3200	2.3	9.0	3.3	1.4	1.0	1	230	0.23	1/200	0.003	2650												
							230	0.23																										
AC-1C-MD	3.0	11.3	4.6	2.0	1.4	1	115	0.45	1/200	0.003	3200	2.3	9.0	3.3	1.4	1.0	1	230	0.23	1/200	0.003	2650												
							230	0.23																										

All specifications & data are based on pumping water & are intended as a guideline only. Specifications may vary with different motors.



AC-1A-MD-3/8				AC-1A-MD-1/2			
Item	Part Number	QTY REQ	Description	Item	Part Number	QTY REQ	Description
1	0115-0062-1000	4	#7-19 x 1-7/16" Long Self-Tapping Screw (Stainless)	1	0115-0062-1000	4	#7-19 x 1-7/16" Long Self-Tapping Screw (Stainless)
2	0115-0075-1000	1	Cover with 3/8" OD Inlet (Polypropylene)	2	0115-0060-1000	1	Cover with 1/2" OD Inlet (Polypropylene)
5	0115-0018-1000	1	1/16" CS x 1-7/16" OD "O" Ring for Cover (Buna N)	5	0115-0018-1000	1	1/16" CS x 1-7/16" OD "O" Ring for Cover (Buna N)
6	0115-0119-1000	1	Encapsulated Impeller (Polypropylene)	6	0115-0119-1000	1	Encapsulated Impeller (Polypropylene)
7	0115-0032-1000	1	Shaft (316 Stainless Steel)	7	0115-0032-1000	1	Shaft (316 Stainless Steel)
8	0115-0033-1000	1	Thrust Washer (Carbon/Teflon)	8	0115-0033-1000	1	Thrust Washer (Carbon/Teflon)
11	0115-0074-1000		Rear Housing with 3/8" OD Outlet (Polypropylene)	10	0115-0059-1000	1	Rear Housing with 1/2" OD Outlet (Polypropylene)
12	Not Available		Motor Assembly (115V 50/60 Hz) or (230V 50/60 Hz)	12	Not Available		Motor Assembly (115V 50/60 Hz) or (230V 50/60 Hz)
AC-1C-MD				Materials in contact with the solution:			
1	0115-0062-1000	4	#7-19 x 1-7/16" Long Self-Tapping Screw (Stainless)	Polypropylene, Buna N, 316 Stainless Steel, Carbon/Teflon Washer. Note: Contact Factory for other materials and/or parts not listed. Special voltage motors are available upon special order.			
2	0115-0058-1000	1	Cover with 1/4" MPT Inlet (Polypropylene)				
5	0115-0018-1000	1	1/16" CS x 1-7/16" OD "O" Ring for Cover (Buna N)				
6	0115-0119-1000	1	Encapsulated Impeller (Polypropylene)				
7	0115-0032-1000	1	Shaft (316 Stainless Steel)				
8	0115-0033-1000	1	Thrust Washer (Carbon/Teflon)				
9	0115-0057-1000	1	Rear Housing with 1/4" MPT Outlet (Polypropylene)				
12	Not Available		Motor Assembly (115V 50/60 Hz) or (230V 50/60 Hz)				

LIMITED WARRANTY: March pumps are guaranteed only against defects in workmanship or materials for a period of one year from date of manufacture pumping water. For the complete warranty and to register online go to www.marchpump.com/warranty-registration

For the General Installation Manual, see this link <https://www.marchpump.com/wp-content/uploads/2019/07/march-pump-general-installation-guide-0750-040.pdf>

Or Scan QR Code

