

HORIZONTAL MULTISTAGE PUMPS

Stainless Steel - Electric Motor

VHSE 2 6-13-1 HF



Model	Ref.	Power (HP)	Phases	Voltage (v)	Current (Amps)	Stages	H max. (m) *	Q max. (GPM) **	Suction	Discharge	Weight (kg)
VHSE 2 6-13-1-HF	E0773	1.3	1	115	12.7/6.35	6	76	28	1"	1"	11.0

* The maximum head (H) is achieved with the valve fully closed. (m = meters).

** Maximum flow (Q) is achieved with valve fully open. ((Gpm) ** = Gallons per minute).

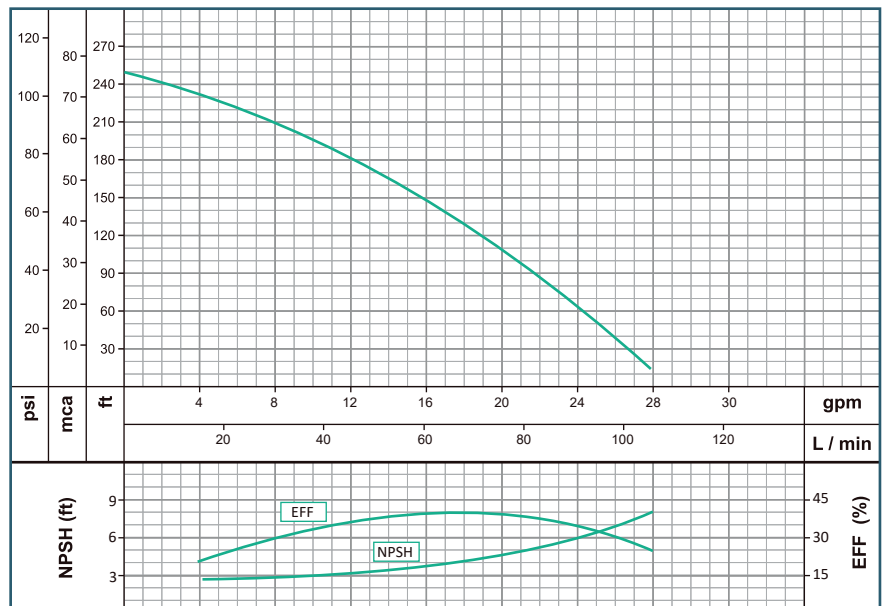


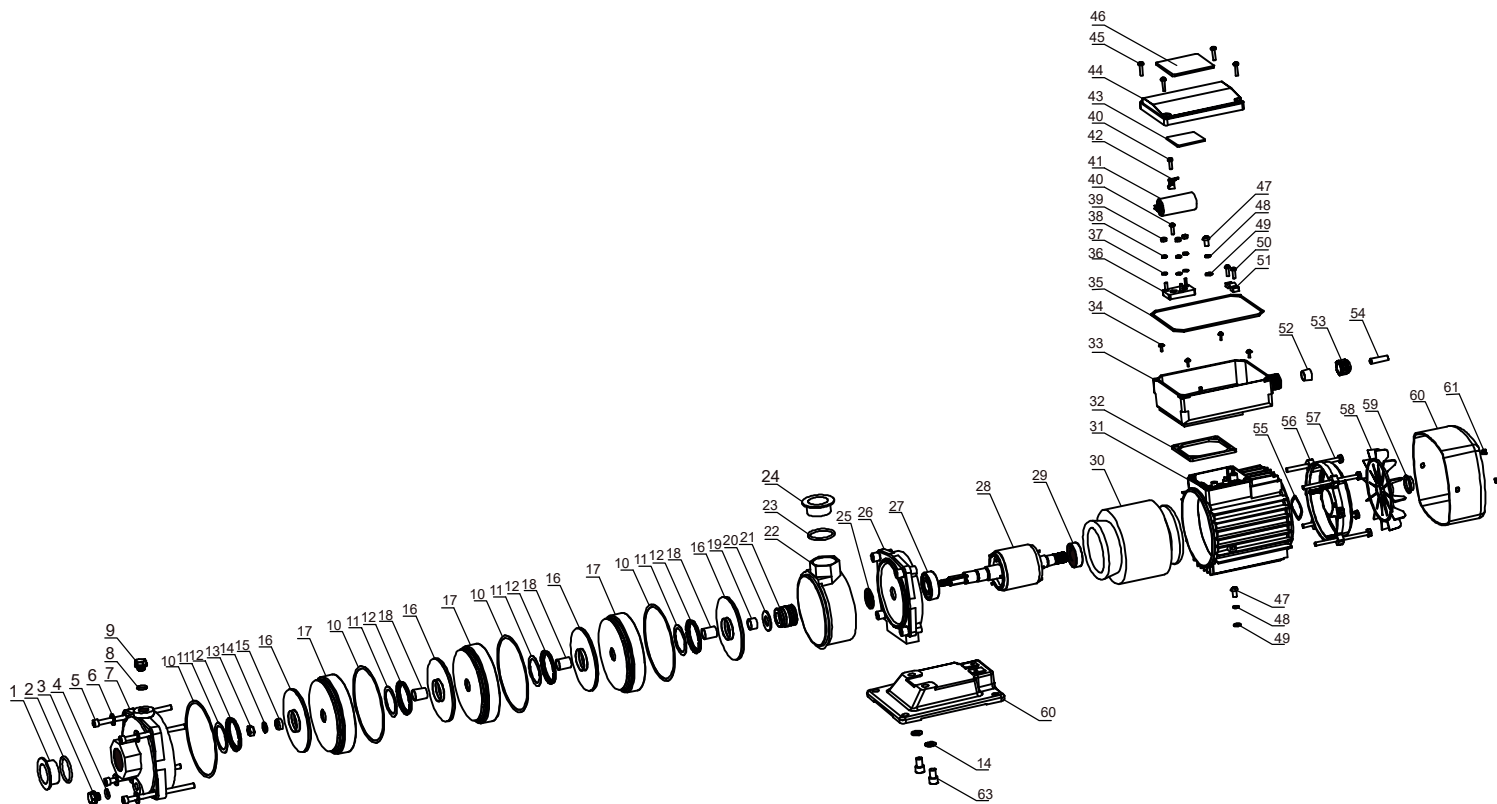
Materials	
Body	Stainless Steel 304
Volute	Stainless Steel 304
Impeller	Stainless Steel 304
Mechanical Seal	Ceramic / Carbon / Buna-N.
Base	Cast Iron
Gaskets	Buna - N

Pump Features	
Pump Type	Centrifugal
Design	Close Coupled
Suction	1" NPT
Discharge	1" NPT
Impeller	Closed Dynamically Balanced SO G6,3
Number of impellers	6
Seal Type	Mechanical Seal
Fluid Temp	70° C (158° F)

Motor Features	
Motor Type	Electric
Power	1.3Hp
Speed	3.450 RPM (nominal)
Isolation	Class F
Voltage	110 v
Service factor	1,0
Frequency	60Hz
Phases	1

Applications	
-	Clean water supply
-	Recirculation of water in cooling towers
-	Machinery cooling / recirculation circuits
-	Filling tank and drinkers
-	Drip irrigation
-	Pressure Equipment





Item	Part No.	Description	Qty	Item	Part No.	Description	Qty
1	CM2-60-1	DRAIN PLUG	1	33	CM2-60-33	TERMINAL	1
2	CM2-60-2	O-RING $\phi 9, 2 \times 2, 4$	1	34	CM2-60-34	PHILLIPS SCREW M4x8	4
3	CM2-60-3	PLASTIC CAP 1-1/4"	1	35	CM2-60-35	TERMINAL PACKING	1
4	CM2-60-4	O-RING $\phi 14 \times 2, 4$	1	36	CM2-60-36	CONNECTION TERMINAL	1
5	CM2-60-5	SOCKET SCREW M6x145 G5 ZINC	4	37	CM2-60-37	WASHER $\phi 4$	3
6	CM2-60-6	LOCK WASHER $\phi 6$	4	38	CM2-60-38	FLAT WASHER $\phi 4$ ZINC	3
7	CM2-60-7	O-RING $\phi 15 \times 2, 4$	1	39	CM2-60-39	M4 HEX NUT	6
8	CM2-60-8	INLET CASE	1	40	CM2-60-40	SCREW 3.5x16	2
9	CM2-60-9	PRIMING PLUG G3/8	1	41	CM2-60-41	CAPACITOR 20uF/450V	1
10	CM2-60-10	FLAT GASKET	4	42	CM2-60-42	CAPACITOR SUPPORT	1
11	CM2-60-11	OUTER RING TEFLON GASKET	4	43	CM2-60-43	CONNECTION DIAGRAM	1
12	CM2-60-12	OUTER RING FOR IMPELLER	4	44	CM2-60-44	TERMINAL COVER	1
13	CM2-60-13	NUT M8	1	45	CM2-60-45	PHILLIPS SCREW M3.5x16	4
14	CM2-60-14	LOCK WASHER $\phi 8$	3	46	CM2-60-46	IDENTIFICATION PLATE	1
15	CM2-60-15	IMPELLER FIXING RING	1	47	CM2-60-47	PHILLIPS SCREW M5x10	2
16	CM2-60-16	IMPELLER CM2	4	48	CM2-60-48	LOCK WASHER $\phi 5$	2
17	CM2-60-17	VOLUTE	3	49	CM2-60-49	FLAT WASHER $\phi 5$ ZINC	1
18	CM2-60-18	SHAFT SLEEVE L 26.4	3	50	CM2-60-50	SCREW 3.5x16	2
19	CM2-60-19	SHORT SHAFT SLEEVE L = 15	1	51	CM2-60-51	CABLE TERMINAL	1
20	CM2-60-20	AXIAL THRUST WASHER	1	52	CM2-60-52	SPACER IN NBR	4
21	CM2-60-21	MECHANICAL SEAL	1	53	CM2-60-53	CORD OUTLET FITTING	1
22	CM2-60-22	OUTPUT SECTION	1	54	CM2-60-54	CORD	1
23	CM2-60-23	O-RING $\phi 33 \times \phi 36 \times 1, 5$	1	55	CM2-60-55	WASHER	1
24	CM2-60-24	PLASTIC CAP 1"	1	56	CM2-60-56	REAR MOTOR SHIELD	1
25	CM2-60-25	DEFLECTOR	1	57	CM2-60-57	HEX SCREW M5x142	4
26	CM2-60-26	MOTOR-PUMP COUPLING	1	58	CM2-60-58	FAN	4
27	CM2-60-27	BALL BEARING 6203	1	59	CM2-60-59	FAN FIXING RING	4
28	CM2-60-28	ROTOR	1	60	CM2-60-60	FAN COVER	1
29	CM2-60-29	BALL BEARING 6202	1	61	CM2-60-61	PHILLIPS SCREW WITH WASHER M4x8	2
30	CM2-60-30	STATOR	1	62	CM2-60-62	BASE	1
31	CM2-60-31	MOTOR CASE	1	63	CM2-60-63	HEX SCREW M8x16 ZINC PLATED	2
32	CM2-60-32	LOWER TERMINAL PACKING	1				

