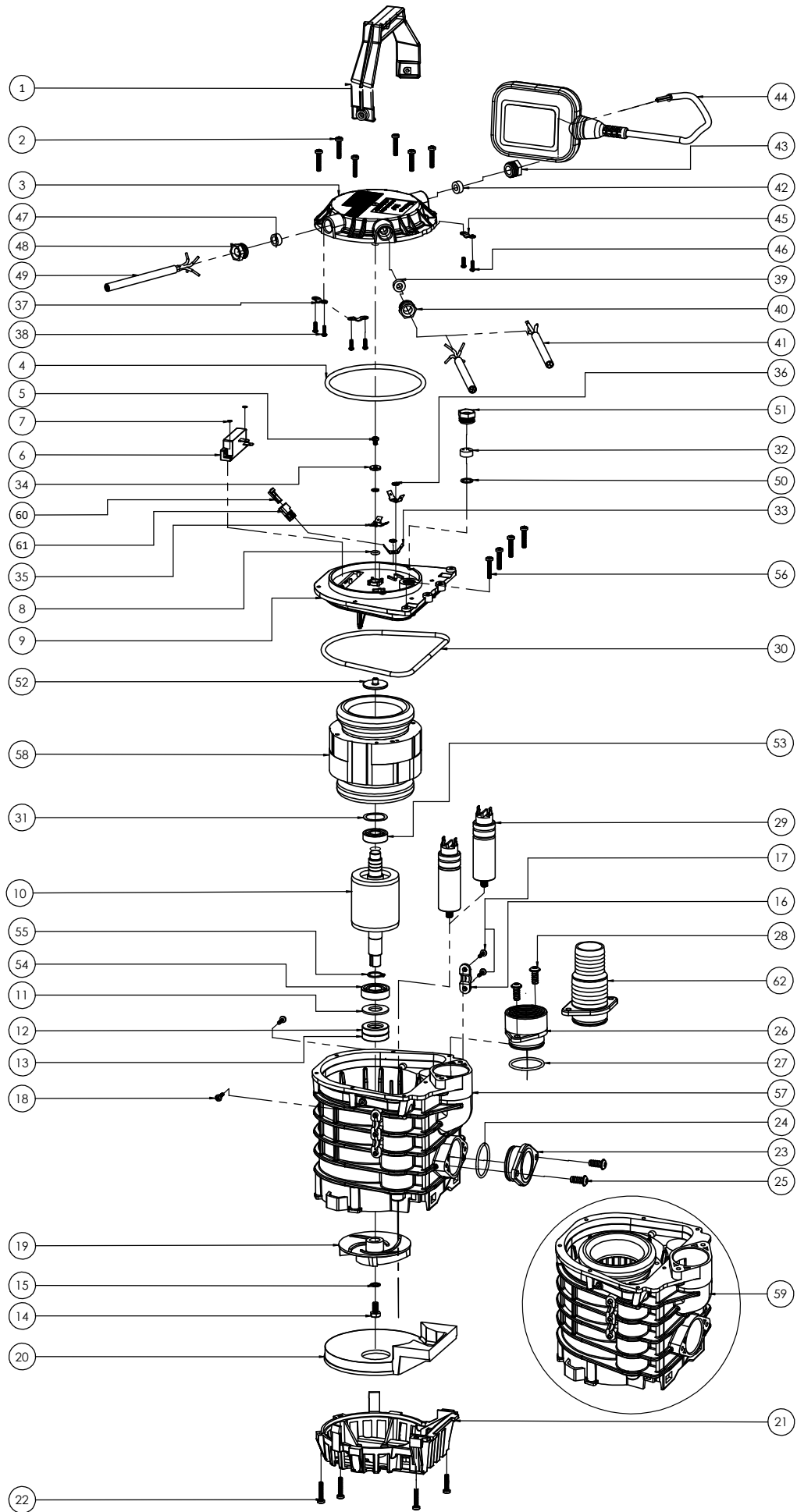


PERFECTA Pump Exploded View, Diagram : G



PERFECTA Pump-0.4HP, 2 Pole Parts List			
Pos. No.	Part Name	Pos. No.	Part Name
1	Pump Handle	42	Cable Grommet (for Float Cable)
2	Screw 4.2X22	43	Cable Entry (for Float Cable)
3	Pump Top Cover	44	Float Switch
4	O-ring 105X5	45	Cable Clamp (In side Top Cover)
5	Screw 4X6	46	Screw 2.9X9.5
6	Relay, Pump Protection	47	Cable Grommet (for Float + Over Load Cable)
7	Washer, Lock Relay	48	Cable Entry (for Float + Over Load Cable)
8	O-ring 6X2	49	Float+Over Load Output Cable
9	Motor Housing Cover	50	Washer, Sealing Ring
10	Rotor	51	Cable Entry (for Sealing Ring)
11	Spacer	52	Bronze Washer
12	Shaft Seal Ring (Upper Lip Seal)	53	Upper Ball Bearing 6001
13	Shaft Seal Ring (Lower Lip Seal)	54	Lower Ball Bearing 6002
14	Shaft Bolt M6X15	55	Retaining Ring, Lower Bearing
15	Serrated Washer	56	Screw 4.2X22
16	Cable Clamp For Float Switch	57	Pump Casing
17	Screw 2.9X13	58	PERFECTA, Wound Stator Core
18	Screw 2.9X13	59	PERFECTA, Wound Stator
19	Impeller	60	PERFECTA, Flag Type Terminal
20	Suction Cover Plate	61	PERFECTA, Flag Type Housing
21	Strainer	62	Tapered Hose Connection, 1 1/4"-1 1/2"
22	Screw 4.2X22		
23	Discharge Cap		
24	O-ring 35X2.5		
25	Screw 6X15		
26	Threaded Female Flange		
27	O-ring 35X2.5		
28	Screw 6X15		
29	Capacitor		
30	O-ring 125X5		
31	Wave Washer		
32	Sealing Ring		
33	Terminal, 2 Prong		
34	Washer 12X4		
35	Terminal, 3 Prong		
36	Serrated Washer		
37	Cable Clamp (In side Top Cover)		
38	Screw 2.9X9.5		
39	Cable Grommet (for Power Cable)		
40	Cable Entry (for Power Cable)		
41	Power Cable		