



# MARCH PUMPS

1819 PICKWICK AVE., GLENVIEW, IL 60026-1306, U.S.A  
 PHONE: (847) 729-5300 - FAX: (847) 729-7062  
 WWW.MARCHPUMP.COM

## AC-2CP-MD, AC-2AP-MD, BC-2CP-MD, BC-2AP-MD

**DESCRIPTION:** Series 2 are centrifugal magnetic drive pumps, eliminating the need for a shaft seal. Pumps can be serviced with a screwdriver. See the parts list for a breakdown of parts. BC models have an encapsulated impeller magnet.

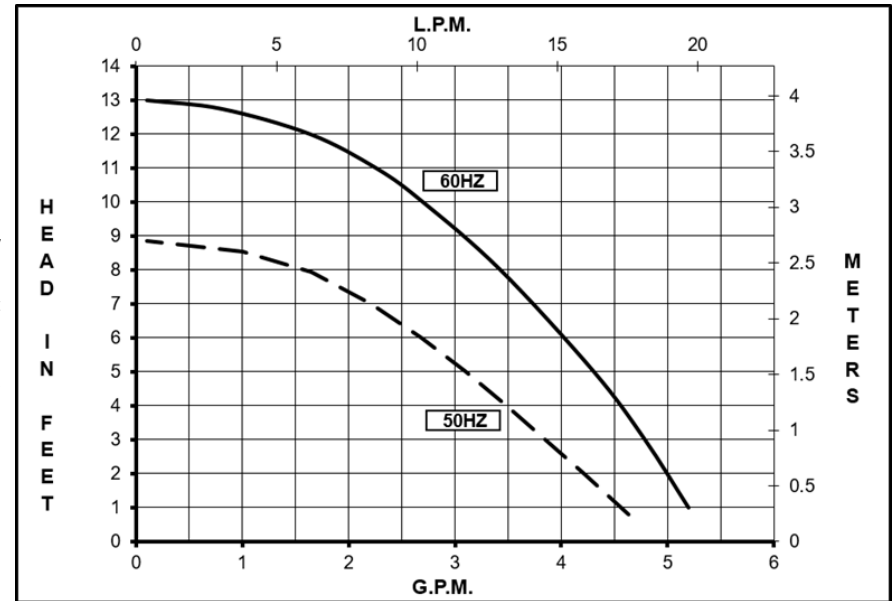
**OPERATION:** Pumps are not self-priming, lack a suction lift, and thus require a **flooded suction**. Pumps **cannot be run dry** because the impeller requires the liquid being pumped for lubrication. For liquids with a specific gravity greater than water, have a higher viscosity, or for elevated temperatures, a trimmed impeller may be necessary. For application assistance, contact March Pump.

**ELECTRICAL:** The AC-2CP-MD & AC-2AP-MD open air cooled motors as well as BC-2CP-MD & BC-2AP-MD blast cooled motors are available in different electrical configurations such as, 115V 50/60Hz, or 230V 50/60Hz, 1 phase.

AC-2CP-MD & AC-2AP-MD have an air cooled motor with a 3 ft (0.9 m) cord.

BC-2CP-MD & BC-2AP-MD have a blast cooled motor with a 3 ft (0.9 m) cord.

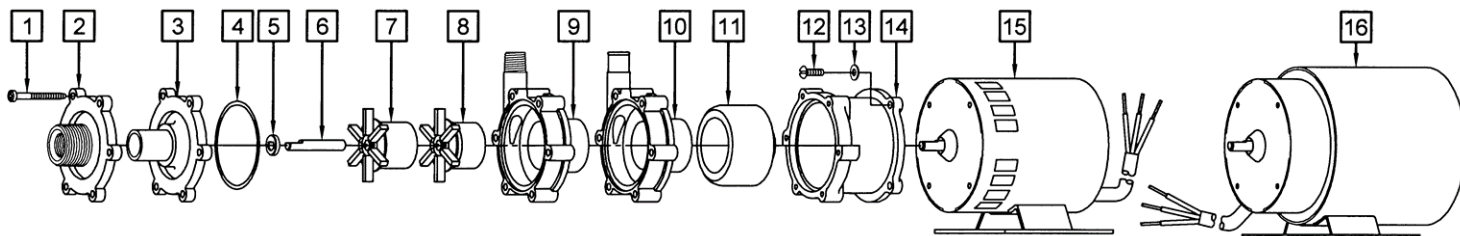
All motors are U.L. listed and rated for continuous duty.



Specifications		AC-2CP-MD	AC-2AP-MD	BC-2CP-MD	BC-2AP-MD
Product	115V	0125-0069-0100	0125-0069-0400	0125-0088-0100	0125-0088-0400
	230V	0125-0069-0300	0125-0069-0500	0125-0088-0200	0125-0088-0500
Inlet-Outlet		3/8" FPT & 3/4" MPT-1/4" MPT	3/4" OD-1/2" OD	3/8" FPT & 3/4" MPT-1/4" MPT	3/4" OD-1/2" OD
Max Internal Pressure		50PSI (344 kPa)	50PSI (344 kPa)	50PSI (344kPa)	50PSI (344 kPa)
Max Liquid Temperature		190F/87C	190F/87C	190F/87C	190F/87C

Model	60Hz												50Hz											
	Max Flow		Max Head			Electrical							Max Flow		Max Head			Electrical						
	GPM	LPM	FT	PSI	M	Ph	V	A	HP	kW	RPM	GPM	LPM	Feet	PSI	M	Ph	V	A	HP	kW	RPM		
AC-2CP-MD	5	18.9	13	5.7	4	1	115/230	1.2/0.6	1/40	0.019	3450	4.89	18.5	8.8	3.8	2.7	1	115/230	1.2/0.6	1/40	0.019	2850		
AC-2AP-MD	5	18.9	13	5.7	4	1	115/230	1.2/0.6	1/40	0.019	3450	4.89	18.5	8.8	3.8	2.7	1	115/230	1.2/0.6	1/40	0.019	2850		
BC-2CP-MD	5	18.9	13	5.7	4	1	115/230	1.2/0.5	1/40	0.019	3450	4.89	18.5	8.8	3.8	2.7	1	115/230	1.2/0.5	1/40	0.019	2850		
BC-2AP-MD	5	18.9	13	5.7	4	1	115/230	1.2/0.5	1/40	0.019	3450	4.89	18.5	8.8	3.8	2.7	1	115/230	1.2/0.5	1/40	0.019	2850		

All specifications & data are based on pumping water & are intended as a guideline only. Specifications may vary with different motors.



**NOTE:** When attaching the Drive Magnet to the motor shaft, position the face of the Drive Magnet 1/16 inch below the face of the Motor Bracket.

AC-2CP-MD				BC-2CP-MD			
Item	Part Number	QTY REQ	Description	Item	Part Number	QTY REQ	Description
1	0115-0062-1000	6	#7-19 x 1-7/16" Long Self-Tapping Screw (Stainless)	1	0115-0062-1000	6	#7-19 x 1-7/16" Long Self-Tapping Screw (Stainless)
2	0125-0056-1000	1	Cover with 3/8" FPT x 3/4" MPT Inlet (Polypropylene)	2	0125-0056-1000	1	Cover with 3/8" FPT x 3/4" MPT Inlet (Polypropylene)
4	0125-0065-1000	1	3/32" CS x 2-3/16" OD "O" Ring (Viton)	4	0125-0065-1000	1	3/32" CS x 2-3/16" OD "O" Ring (Viton)
5	0130-0028-1000	1	Thrust Washer (Ceramic)	5	0130-0028-1000	1	Thrust Washer (Ceramic)
6	0125-0061-1000	1	Shaft (Ceramic)	6	0125-0061-1000	1	Shaft (Ceramic)
8	0125-0055-0100	1	Impeller with Bare Ceramic Magnet (Polypropylene)	7	0125-0087-0200	1	Encapsulated Impeller (Polypropylene)
9	0125-0058-1000	1	Rear Housing with 1/4" MPT Outlet (Polypropylene)	9	0125-0058-1000	1	Rear Housing with 1/4" MPT Outlet (Polypropylene)
11	0125-0083-0100	1	0.250" Bore Drive Magnet	11	0125-0083-0100	1	0.250" Bore Drive Magnet
12	0150-0015-1000	4	#8-32 x 1/2" Long Screw (Stainless)	12	0150-0015-1000	4	#8-32 x 1/2" Long Screw (Stainless)
13	0858-0004-1000	4	#8 Washer (Stainless)	13	0858-0004-1000	4	#8 Washer (Stainless)
14	0125-0069-1000	1	Motor Bracket (Plastic)	14	0125-0069-1000	1	Motor Bracket (Plastic)
15A	0125-0052-1000	1	Motor 115V, 50/60Hz, Air Cooled	16A	0125-0088-1000	1	Motor 115V, 50/60Hz, Blast Cooled
15B	0125-0063-1000	1	Motor 230V, 50/60Hz, Air Cooled	16B	0125-0089-1000	1	Motor 230V, 50/60Hz, Blast Cooled
W	0125-0108-0200	1	Wet End Kit (1,2,4,5,6,8,9)	W	0125-0109-0200	1	Wet End Kit (1,2,4,5,6,7,9)
AC-2AP-MD				BC-2AP-MD			
1	0115-0062-1000	6	#7-19 x 1-7/16" Long Self-Tapping Screw (Stainless)	1	0115-0062-1000	6	#7-19 x 1-7/16" Long Self-Tapping Screw (Stainless)
3	0125-0096-1000	1	Cover with 3/4" OD Smooth Inlet (Polypropylene)	3	0125-0096-1000	1	Cover with 3/4" OD Smooth Inlet (Polypropylene)
4	0125-0065-1000	1	3/32" CS x 2-3/16" OD "O" Ring (Viton)	4	0125-0065-1000	1	3/32" CS x 2-3/16" OD "O" Ring (Viton)
5	0130-0028-1000	1	Thrust Washer (Ceramic)	5	0130-0028-1000	1	Thrust Washer (Ceramic)
6	0125-0061-1000	1	Shaft (Ceramic)	6	0125-0061-1000	1	Shaft (Ceramic)
8	0125-0055-0100	1	Impeller with Bare Ceramic Magnet (Polypropylene)	7	0125-0087-0200	1	Encapsulated Impeller (Polypropylene)
10	1008-0001-1000	1	Rear Housing with 1/2" OD Smooth Outlet (Polypropylene)	10	1008-0001-1000	1	Rear Housing with 1/2" OD Smooth Outlet (Polypropylene)
11	0125-0083-0100	1	0.250" Bore Drive Magnet	11	0125-0083-0100	1	0.250" Bore Drive Magnet
12	0150-0015-1000	4	#8-32 x 1/2" Long Screw (Stainless)	12	0150-0015-1000	4	#8-32 x 1/2" Long Screw (Stainless)
13	0858-0004-1000	4	#8 Washer (Stainless)	13	0858-0004-1000	4	#8 Washer (Stainless)
14	0125-0069-1000	1	Motor Bracket (Plastic)	14	0125-0069-1000	1	Motor Bracket (Plastic)
15A	0125-0052-1000	1	Motor 115V, 50/60Hz, Air Cooled	16A	0125-0088-1000	1	Motor 115V, 50/60Hz, Blast Cooled
15B	0125-0063-1000	1	Motor 230V, 50/60Hz, Air Cooled	16B	0125-0089-1000	1	Motor 230V, 50/60Hz, Blast Cooled

NOTE: Contact Factory for other materials and/or parts not listed.

Special voltage motors are available upon special order.

**Materials in contact with the liquid:** AC Models: Polypropylene, Viton, Ceramic, Ceramic Magnet. BC Models: Polypropylene, Viton, Ceramic

**LIMITED WARRANTY:** March pumps are guaranteed only against defects in workmanship or materials for a period of one year from date of manufacture pumping water. For the complete warranty and to register online go to [www.marchpump.com/warranty-registration](http://www.marchpump.com/warranty-registration)

For the General Installation Manual, see this link <https://www.marchpump.com/wp-content/uploads/2019/07/march-pump-general-installation-guide-0750-040.pdf>

Or Scan QR Code





# MARCH PUMPS

1819 PICKWICK AVE., GLENVIEW, IL 60026-1306, U.S.A  
 PHONE: (847) 729-5300 - FAX: (847) 729-7062  
 WWW.MARCHPUMP.COM

## DESCRIPTION:

Series 2 are centrifugal magnetic drive pumps, eliminating the need for a shaft seal. The "LC" model is hermetically encapsulated for complete moisture protection. Model 2CP-MD must be run submerged only. See the parts list for a breakdown of parts.

## OPERATION:

Pumps are not self-priming, lack a suction lift, and thus require a **flooded suction**. Pumps **cannot be run dry** because the impeller requires the liquid being pumped for lubrication. For liquids with a specific gravity greater than water, have a higher viscosity, or for elevated temperatures, a trimmed impeller may be necessary. For application assistance, contact March Pump.

## ELECTRICAL:

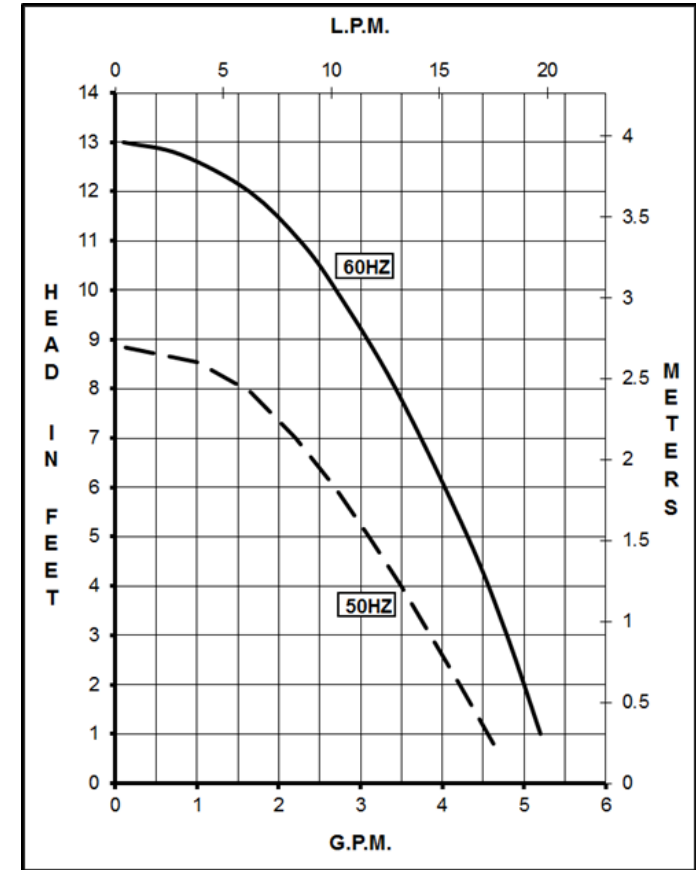
Motors are available in different electrical configurations such as 115V 50/60HZ or 230V 50/60HZ 1 phase.

The motors are U.L. listed and rated for continuous duty.

Model 2CP-MD 115 V has a 6 ft (1.8 m) cord with plug, 230 V has a 6 ft (1.8 m) cord.

Models LC-2CP-MD 115 V & 230 V have a 6 ft (1.8 m) cord.

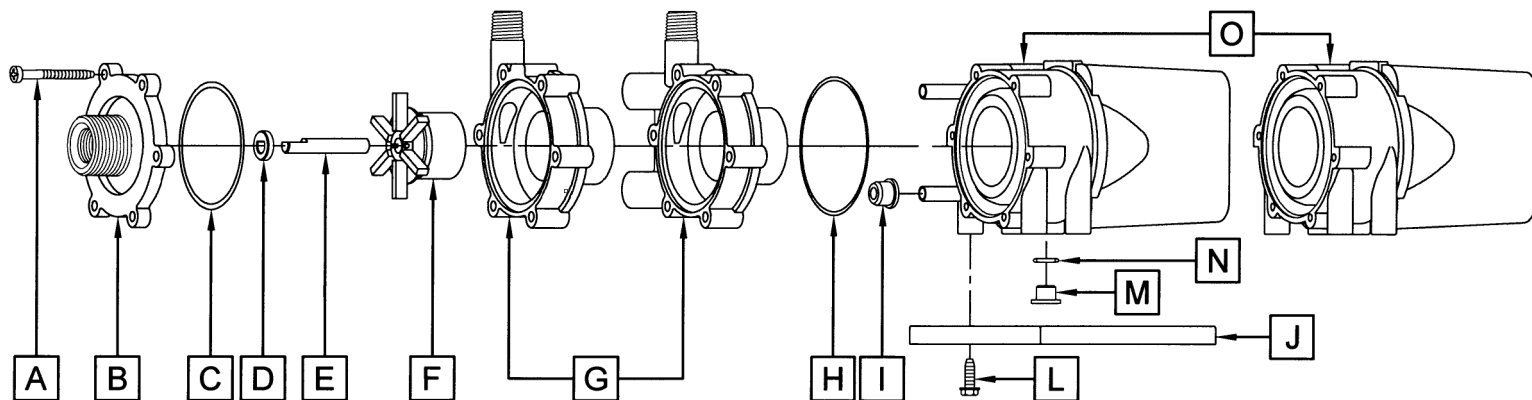
## 2CP-MD, LC-2CP-MD



Specifications		2CP-MD	LC-2CP-MD
Product	115V	0125-0058-0100	0125-0057-0200
	230V	0125-0058-0200	0125-00527-0300
Inlet-Outlet		3/8" FPT & 3/4" MPT-1/4" MPT	3/8" FPT & 3/4" MPT-1/4" MPT
Max Internal Pressure		50 psi (344 kPa)	25 psi (172kPa)
Max Liquid Temperature		130F (54C)	130F (54C)

Model	60Hz												50Hz											
	Max Flow		Max Head			Electrical							Max Flow		Max Head			Electrical						
	GPM	LPM	FT	PSI	M	Ph	V	A	HP	kW	RPM	GPM	LPM	Feet	PSI	M	Ph	V	A	HP	kW	RPM		
2CP-MD	5	18.9	13	5.7	4	1	115/230	0.92/0.53	1/50 & 1/40	0.015/0.019	3450	4.89	18.5	8.8	3.8	2.7	1	115/230	1.1/0.72	1/55	0.014	2850		
LC-2CP-MD	5	18.9	13	5.7	4	1	115/230	0.92/0.53	1/50 & 1/40	0.015/0.019	3450	4.89	18.5	8.8	3.8	2.7	1	115/230	1.1/0.72	1/55	0.014	2850		

All specifications & data are based on pumping water & are intended as a guideline only. Specifications may vary with different motors.



**NOTE:** When attaching the Drive Magnet to the motor shaft, position the face of the Drive Magnet 1/16 inch below the face of the Motor Bracket.

2CP-MD				LC-2CP-MD			
Item	Part Number	QTY REQ	Description	Item	Part Number	QTY REQ	Description
A	0115-0062-1000	6	#10-32 x 1" Long Screw (Stainless)	A	0115-0062-1000	6	#10-32 x 1" Long Screw (Stainless)
B	0125-0056-1000	1	Cover with 3/8" FPT x 3/4" MPT Inlet (Polypropylene)	B	0125-0056-1000	1	Cover with 3/8" FPT x 3/4" MPT Inlet (Polypropylene)
C	0125-0065-1000	1	3/32" CS x 2-3/16" OD "O" Ring (Viton)	C	0125-0065-1000	1	3/32" CS x 2-3/16" OD "O" Ring (Viton)
D	0130-0028-1000	1	Thrust Washer (Ceramic)	D	0130-0028-1000	1	Thrust Washer (Ceramic)
E	0125-0125-1000	1	Shaft (Stainless)	E	0125-0125-1000	1	Shaft (Stainless)
F	0125-0055-0100	1	Impeller with Bare Ceramic Magnet (Polypropylene)	F	0125-0055-0100	1	Impeller with Bare Ceramic Magnet (Polypropylene)
G	0125-0058-1000	1	Rear Housing with 1/4" MPT Outlet (Polypropylene)	G	0125-0057-0100	1	Rear Housing & Plug with 1/4" MPT Outlet (Polypropylene)
H	0125-0134-1000	1	2MM CS x 57MM ID Bracket "O" Ring (Buna N)	H	0125-0121-1000	1	1/16" CS x 2-3/8" OD Bracket "O" Ring (Viton)
				I	0125-0007-1000	2	Cooling Tube Seal (Buna N)
J	0125-0060-1000	1	Mounting Base (Polypropylene)	J	0125-0060-1000	1	Mounting Base (Polypropylene)
L	0125-0130-1000	4	Base Screw (Stainless)	L	0125-0130-1000	4	Base Screw (Stainless)
M	0125-0110-1000	1	Motor Bracket Plug	M	0125-0110-1000	1	Motor Bracket Plug
N	0210-0008-1000	1	1/16" CS x 7/16" OD "O" Ring (Viton)	N	0210-0008-1000	1	1/16" CS x 7/16" OD "O" Ring (Viton)
O	N/A	1	Epoxy Motor Assembly	O	N/A	1	Epoxy Motor Assembly
				W	0125-0115-0200	1	Wet End Kit (A,B,C,D, E,F,G,H,I)

Materials in contact with the solution : Polypropylene, Ceramic, Viton, Stainless Steel, Ceramic Magnet. When submerged, also: Epoxy, Buna N, Cord

**LIMITED WARRANTY:** March pumps are guaranteed only against defects in workmanship or materials for a period of one year from date of manufacture pumping water. For the complete warranty and to register online go to [www.marchpump.com/warranty-registration](http://www.marchpump.com/warranty-registration)

NOTE: Contact Factory for other materials and/or parts not listed.

Special voltage motors are available upon special order.

For the General Installation Manual, see this link <https://www.marchpump.com/wp-content/uploads/2019/07/march-pump-general-installation-guide-0750-040.pdf>

Or Scan QR Code



0125-0074-1000 Rev 26