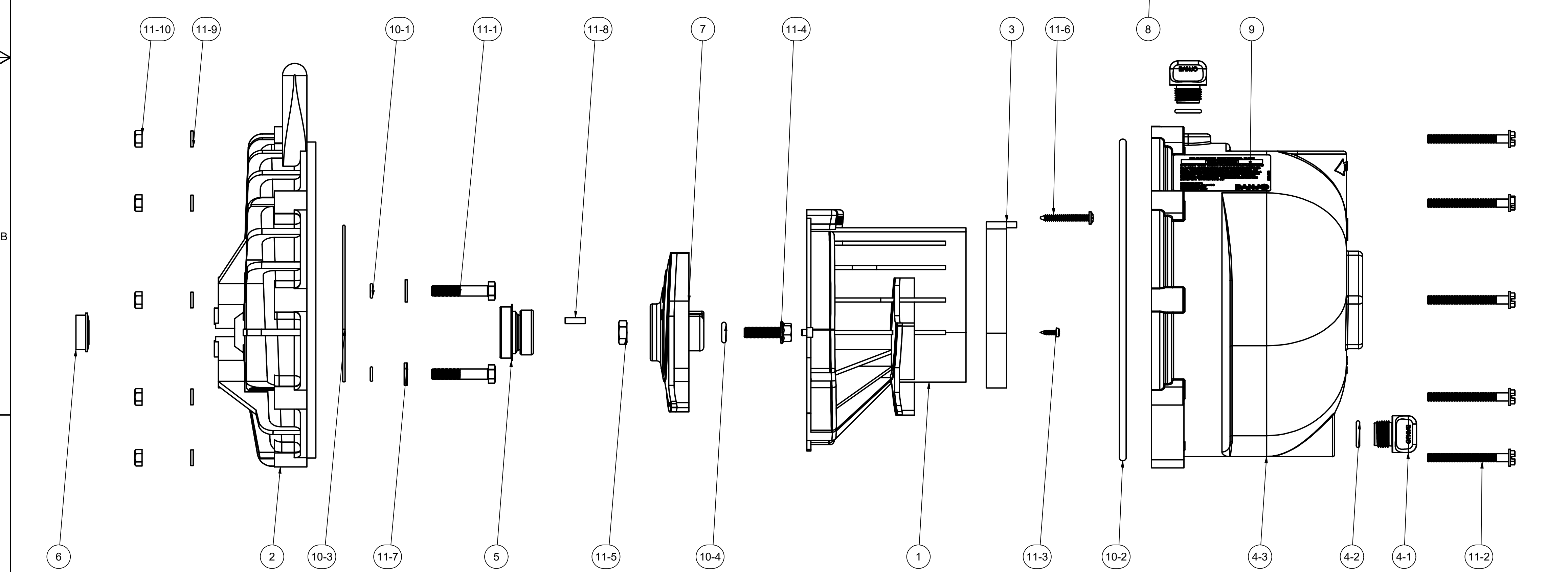


NOTE:
 BOTH 12771A & 12772 ARE INCLUDED
 CUSTOMER MAY CHOOSE
 WHICH IMPELLER IS BEST TO USE.

PARTS LIST			
ITEM	QTY	PART NUMBER	DESCRIPTION
1	1	12702A	2" POLY PUMP VOLUTE
2	1	12703A	POLY PUMP REAR BRACKET
3	1	12705	PUMP CHECKVALVE, EPDM
4	1	12712A	2" POLY PUMP BODY
4-1	2	12777	1/2" DRAIN PLUG
4-2	2	UV15163	AS568A -114 O-RING, EPDM, BLACK
4-3	1	X12712A	2" POLY PUMP BODY
5	1	12713	MECHANICAL SEAL ASSEMBLY, EPDM, IND. BOXED
6	1	12716	PUMP SLINGER
7	1	12771A	POLY 3 VANE IMPELLER
8	1	12772	POLY 5 VANE IMPELLER
9	1	12910	PUMP WARNING LABEL
10	1	PUMPKIT001	EPDM O-RING KIT FOR POLY PUMP
10-1	4	12717	AS568A -011 O-RING, EPDM
10-2	1	12719A	AS568A -375 O-RING, EPDM, BLACK
10-3	1	12754	O-RING SEGMENT
10-4	1	A204	AS568A -204 O-RING, EPDM, BLACK
11	1	PUMPKIT003	SS HARDWARE KIT FOR POLY PUMP
11-1	4	12715A	5/16-24 X 1 3/4" HHCS WITH TORQ-PATCH
11-2	10	12720	1/4-20 X 2 1/2" SL IND HEX WASHER HEAD SCREW
11-3	2	12725	#6 X 1/2" PPH SMS
11-4	1	12765A	5/16-24 X 1 1/8" HFS
11-5	1	12775A	7/16-14 HEX NUT
11-6	1	12900	#10 X 1 1/2" PPH SMS
11-7	4	12901	5/16" FLAT WASHER
11-8	1	12902A	3/16" SQ. X 5/8" KEY
11-9	10	V07018	1/4" LOCKWASHER
11-10	10	V07019	1/4"-20 S.S. HEX NUT



THIS DRAWING AND ALL INFORMATION CONTAINED THEREON ARE THE EXCLUSIVE PROPERTY OF BANJO CORPORATION.
 UNLESS SPECIFICALLY NOTED, THIS DRAWING AND ITEMS SHOWN ON THIS DRAWING ARE SUBJECT TO CHANGE AT ANY TIME.

BANJO CORPORATION
 150 BANJO DRIVE, CRAWFORDSVILLE, IN 47933
 WEB SITE: WWW.BANJO.CORP.COM
 E-MAIL: BANJOSALES@DEXCORP.COM

DESCRIPTION
 2" POLY PUMP ONLY W/ 3-VANE IMPELLER

PART NUMBER
 200PO