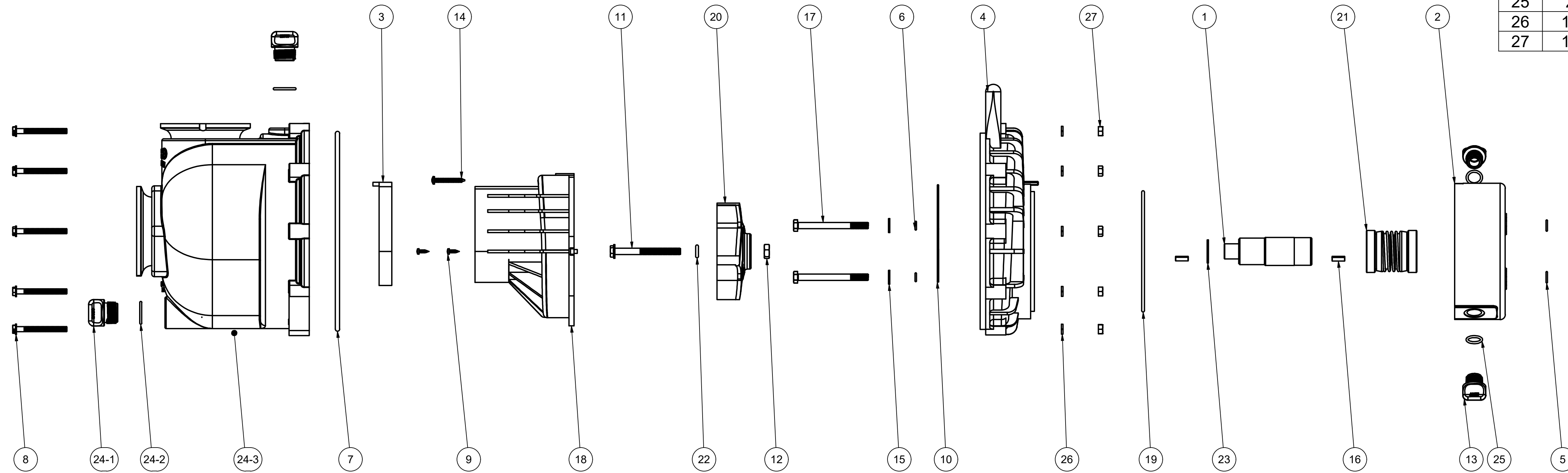


Parts List			
ITEM	QTY	PART NUMBER	DESCRIPTION
1	1	12155	ADAPTER SHAFT
2	1	12202W	2" POLY WET SEAL RESERVOIR
3	1	12705	PUMP CHECKVALVE, EPDM
4	1	12707W	2" POLY WET SEAL REAR BRACKET
5	4	12709	AS568A -013 O-RING, EPDM, BLACK
6	4	12717	AS568A -011 O-RING, EPDM
7	1	12719A	AS568A -375 O-RING, EPDM, BLACK
8	10	12720	1/4-20 X 2 1/2" SL IND HEX WASHER HEAD SCREW
9	2	12725	#6 X 1/2" PPH SMS
10	1	12754	O-RING SEGMENT
11	1	12766	5/16-24 X 3 1/4" HFS
12	1	12775A	7/16-14 HEX NUT
13	2	12777	1/2" DRAIN PLUG
14	1	12900	#10 X 1 1/2" PPH SMS
15	4	12901	5/16" FLAT WASHER
16	2	12902A	3/16" SQ. X 5/8" KEY
17	4	13034	5/16-24 X 3 1/2" HHCS
18	1	13702	3" POLY PUMP VOLUTE
19	1	13719	AS568A -256 O-RING, EPDM, BLACK
20	1	13771	3" POLY PUMP IMPELLER 4.80 OD
21	1	15035E	MECH. SEAL ASSY, EPDM
22	1	A204	AS568A -204 O-RING, EPDM, BLACK
23	1	CV10175	GASKET, EPDM
24	1	M13712	3" MANIFOLD PUMP BODY ASSEMBLY
24-1	2	13777	3/4" DRAIN PLUG, MOLDED
24-2	2	13778	AS568A -119 O-RING, EPDM, BLACK
24-3	1	M13712Y	3" MNFLD POLY PUMP BODY ASSY.
25	2	UV15163	AS568A -114 O-RING, EPDM, BLACK
26	10	V07018	1/4" LOCKWASHER
27	10	V07019	1/4"-20 S.S. HEX NUT



THIS DRAWING AND ALL INFORMATION CONTAINED THEREON ARE THE EXCLUSIVE PROPERTY OF BANJO CORPORATION.

UNLESS SPECIFICALLY NOTED, THIS DRAWING AND ITEMS SHOWN ON THIS DRAWING ARE SUBJECT TO CHANGE AT ANY TIME.

BANJO CORPORATION
 A UNIT OF IDEX CORPORATION
 150 BANJO DRIVE, CRAWFORDSVILLE, IN 47933
 WEB SITE: WWW.BANJOCORP.COM
 E-MAIL: BANJOSALES@IDEXCORP.COM

DESCRIPTION:
3" POLY WET SEAL PUMP, 3/4" SHAFT, MANIFOLD

PART NUMBER:
M300POW6