



# MARCH PUMPS

1819 PICKWICK AVE., GLENVIEW, IL 60026-1306, U.S.A  
 PHONE: (847) 729-5300 - FAX: (847) 729-7062  
 WWW.MARCHPUMP.COM

## DESCRIPTION:

Series MDX are centrifugal magnetic drive pumps, eliminating the need for a shaft seal. Pumps can be serviced with a screwdriver. See the parts list for a breakdown of parts.

## OPERATION:

Pumps are not self-priming, lack a suction lift, and thus require a **flooded suction**. Pumps **cannot be run dry** because the impeller requires the liquid being pumped for lubrication. For application assistance, contact March Pump.

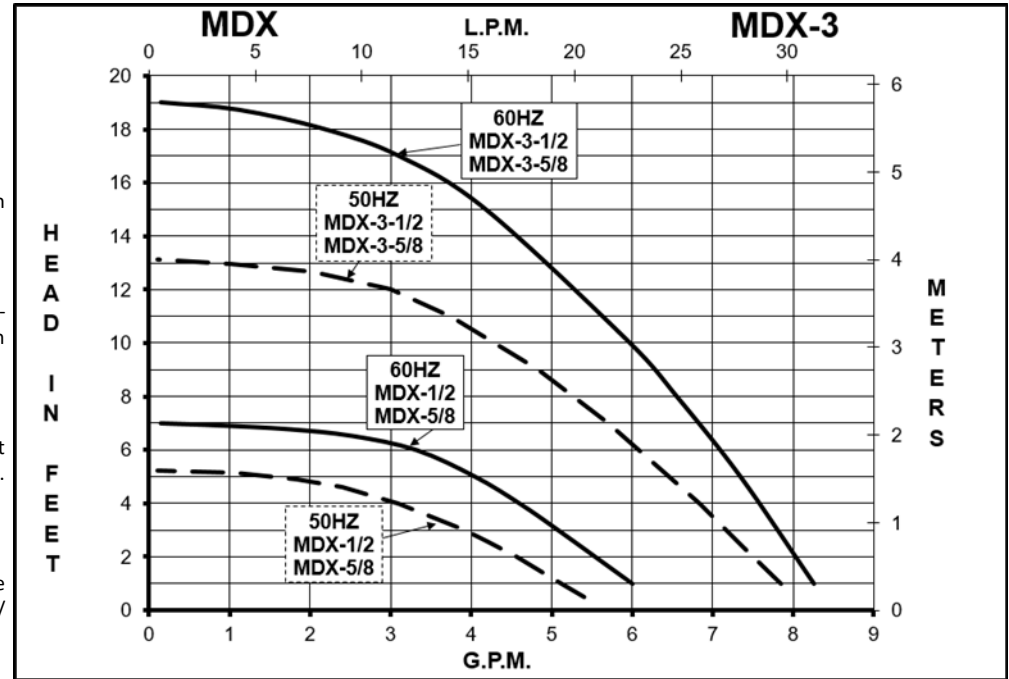
## ELECTRICAL:

All models have air cooled motors that are U.L. listed and are rated for continuous duty. Motors have a 3 foot (0.9 m) cord. Air cooled motors are separate voltage 115 Volt 60 Hz, 115 Volt 50/60 Hz, or 230 Volt 50/60 Hz. Motors are not dual voltage.

## LIMITED WARRANTY:

March pumps are guaranteed only against defects in workmanship or materials for a period of one year from date of manufacture pumping water. For the complete warranty and to register online go to [www.marchpump.com/warranty-registration](http://www.marchpump.com/warranty-registration)

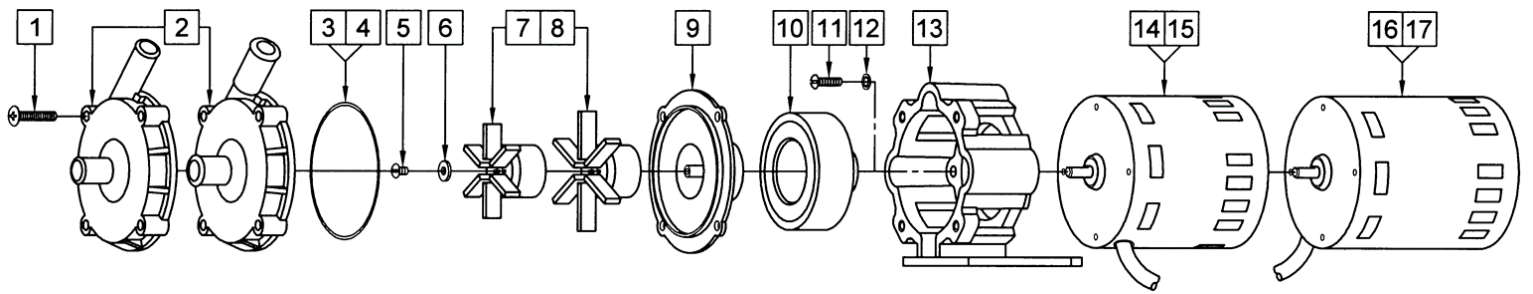
# MDX-1/2, MDX-5/8, MDX-3-1/2, MDX-3-5/8



Specifications		MDX-1/2	MDX-5/8	MDX-3-1/2	MDX-3-5/8
Product	115V	0135-0006-0200	0135-0006-0100	0135-0006-0400	0135-0006-0300
	230V	0135-0163-0100	0135-0163-0200	0135-0163-0300	0135-0163-0400
Inlet-Outlet		1/2"OD-1/2"OD	5/8"OD-5/8"OD	1/2"OD-1/2"OD	5/8"OD-5/8"OD
Max Internal Pressure		50PSI (344 kPa)	50PSI (344 kPa)	50PSI (344kPa)	50PSI (344 kPa)
Max Liquid Temperature		190F (87C)	190F (87C)	190F (87C)	190F (87C)

Model	60Hz											50Hz										
	Max Flow		Max Head			Electrical						Max Flow		Max Head			Electrical					
	GPM	LPM	FT	PSI	M	Ph	V	A	HP	kW	RPM	GPM	LPM	Feet	PSI	M	Ph	V	A	HP	kW	RPM
MDX-1/2	6	22.7	7	3.03	2.13	1	115/230	.94/.45	1/55, 1/40	.014/.019	1750	5.8	22	5.2	2.3	1.6	1	230	.5	1/40	.019	1300
MDX-5/8	6	22.7	7	3.03	2.13	1	115/230	.94/.45	1/55, 1/40	.014/.019	1750	5.8	22	5.2	2.3	1.6	1	230	.5	1/40	.019	1300
MDX-3-1/2	8.5	32.2	19	8.2	5.8	1	115/230	1.55/.7	1/25	.03	3450	7.9	30	13.1	5.7	4	1	115/230	1.55/.7	1/25	.03	2850
MDX-3-5/8	8.5	32.2	19	8.2	5.8	1	115/230	1.55/.7	1/25	.03	3450	7.9	30	13.1	5.7	4	1	115/230	1.55/.7	1/25	.03	2850

All specifications & data are based on pumping water & are intended as a guideline only. Specifications may vary with different motors.



**NOTE:** When attaching the Drive Magnet to the motor shaft, position the face of the Drive Magnet 1/16 inch below the face of the Motor Bracket.

MDX-1/2				MDX-5/8			
Item	Part Number	QTY REQ	Description	Item	Part Number	QTY REQ	Description
1	0135-0180-1000	4	#10-32 x 1" Long Screw (Stainless Steel)	1	0135-0180-1000	4	#10-32 x 1" Long Screw (Stainless Steel)
2	0135-0118-1000	1	Front Housing with 1/2" OD Inlet & Outlet (Polypropylene)	2	0135-0117-1000	1	Front Housing with 5/8" OD Inlet & Outlet (Polypropylene)
3	0135-0007-1000	1	1/16" CS x 3" OD "O" Ring (Buna N)	3	0135-0007-1000	1	1/16" CS x 3" OD "O" Ring (Buna N)
8	0135-0026-0100	1	2.625" Dia. Impeller with Bare Ceramic Magnet (Polypropylene)	8	0135-0026-0100	1	2.625" Dia. Impeller with Bare Ceramic Magnet (Polypropylene)
9	0802-0043-1000	1	Rear Housing (Kynar/Carbon Filled)	9	0802-0043-1000	1	Rear Housing (Kynar/Carbon Filled)
10	0135-0126-1000	1	Drive Magnet	10	0135-0126-1000	1	Drive Magnet
11	0618-0027-1000	4	#8-32 x 5/8" Long Screw (Stainless Steel)	11	0618-0027-1000	4	#8-32 x 5/8" Long Screw (Stainless Steel)
12	0620-0010-1000	4	#8 Lock Washer (Stainless Steel)	12	0620-0010-1000	4	#8 Lock Washer (Stainless Steel)
13	0135-0168-0100	1	Motor Bracket (Plastic)	13	0135-0168-0100	1	Motor Bracket (Plastic)
14	0135-0109-1000	1	Motor, 1750RPM, 115V, 60Hz	14	0135-0109-1000	1	Motor, 1750RPM, 115V, 60Hz
15	0135-0112-1000	1	Motor, 1750RPM, 230V, 50/60Hz	15	0135-0112-1000	1	Motor, 1750RPM, 230V, 50/60Hz
MDX-3-1/2				MDX-3-5/8			
1	0135-0180-1000	4	#10-32 x 1" Long Screw (Stainless Steel)	1	0135-0180-1000	4	#10-32 x 1" Long Screw (Stainless Steel)
2	0135-0118-1000	1	Front Housing with 1/2" OD Inlet & Outlet (Polypropylene)	2	0135-0117-1000	1	Front Housing with 5/8" OD Inlet & Outlet (Polypropylene)
3	0135-0007-1000	1	1/16" CS x 3" OD "O" Ring (Buna N)	3	0135-0007-1000	1	1/16" CS x 3" OD "O" Ring (Buna N)
5	0135-0042-1000	1	#8-32 x 1/4" Long Screw (Stainless Steel)	5	0135-0042-1000	1	#8-32 x 1/4" Long Screw (Stainless Steel)
6	0802-0057-1000	1	Thrust Washer (Ryton/Teflon/Carbon)	6	0802-0057-1000	1	Thrust Washer (Ryton/Teflon/Carbon)
7	0135-0043-0100	1	2.062" Dia. Impeller with Bare Ceramic Magnet (Polypropylene)	7	0135-0043-0100	1	2.062" Dia. Impeller with Bare Ceramic Magnet (Polypropylene)
9	0802-0043-1000	1	Rear Housing (Kynar/Carbon Filled)	9	0802-0043-1000	1	Rear Housing (Kynar/Carbon Filled)
10	0135-0126-1000	1	Drive Magnet	10	0135-0126-1000	1	Drive Magnet
11	0618-0027-1000	4	#8-32 x 5/8" Long Screw (Stainless Steel)	11	0618-0027-1000	4	#8-32 x 5/8" Long Screw (Stainless Steel)
12	0620-0010-1000	4	#8 Lock Washer (Stainless Steel)	12	0620-0010-1000	4	#8 Lock Washer (Stainless Steel)
13	0135-0168-0100	1	Motor Bracket (Plastic)	13	0135-0168-0100	1	Motor Bracket (Plastic)
16	0135-0036-1000	1	Motor, 3450RPM, 115V, 50/60Hz	16	0135-0036-1000	1	Motor, 3450RPM, 115V, 50/60Hz
17	0135-0037-1000	1	Motor, 3450RPM, 230V, 50/60Hz	17	0135-0037-1000	1	Motor, 3450RPM, 230V, 50/60Hz

NOTE: Contact Factory for other materials and/or parts not listed.

Special voltage motors are available upon special order.

**Materials in contact with the liquid: MDX-1/2 & MDX-5/8:** Polypropylene, Ceramic Magnet, Buna N, Kynar Carbon Filled.

**MDX-3-1/2 and MDX-3-5/8:** Polypropylene, Ceramic Magnet, Buna N, Kynar Carbon Filled, Ryton/Teflon/Carbon, Stainless Steel.

**LIMITED WARRANTY:** March pumps are guaranteed only against defects in workmanship or materials for a period of one year from date of manufacture pumping water. For the complete warranty and to register online go to [www.marchpump.com/warranty-registration](http://www.marchpump.com/warranty-registration)

For the General Installation Manual, see this link <https://www.marchpump.com/wp-content/uploads/2019/07/march-pump-general-installation-guide-0750-040.pdf>

Or Scan QR Code

